

Module 4 LO9

Bone Fracture and Repair

Dr. Lisa Brinn

lbrinn@fiu.edu

8. Bone Fracture Classification

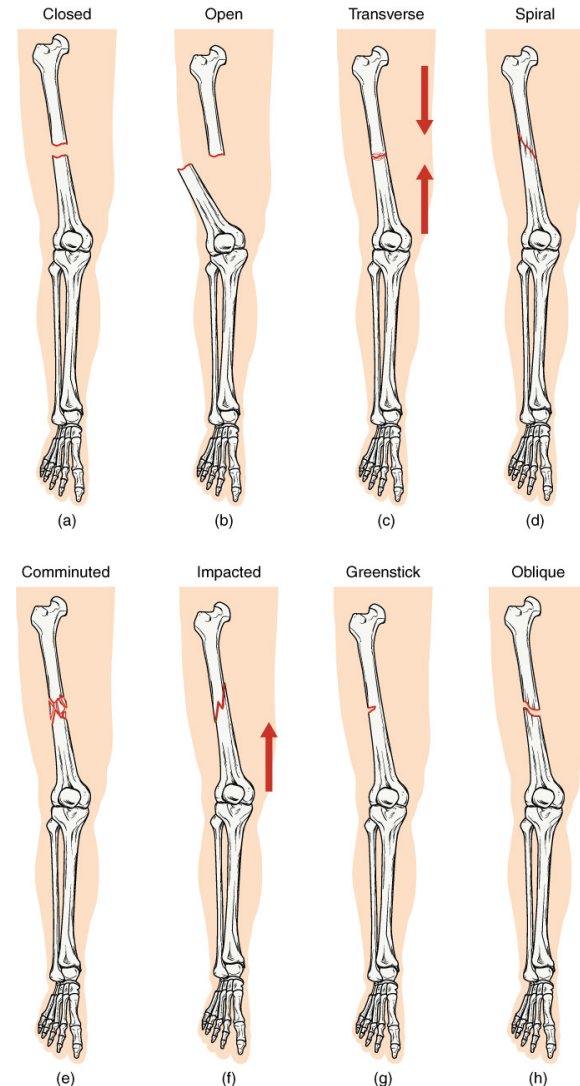
- Closed (simple) fracture
- Open (compound) fracture
- Transverse fracture
- Spiral fracture
- Comminuted fracture
- Impacted fracture
- Greenstick fracture
- Oblique fracture
- Colles fracture
- Pott's fracture



Colles fracture



Pott's fracture



Steps in Repair of Bone Fracture

- Reactive phase - hematoma
- Reparative phase – fibrocartilaginous (soft) callus
- Bone remodeling phase

